

Annwyl Gyngorydd,

PWYLLGOR CYNLLUNIO - DYDD MAWRTH, 21AIN TACHWEDD, 2023

Gweler yn amgaaedig, yr cynlluniau ar gyfer y cyfarfod uchod.

Rhif ar yr Agenda	Eitem
----------------------	-------

3.	<u>PENDERFYNU AR GEISIADAU CYNLLUNIO</u> (Tudalennau 3 - 30)
----	---

Yn gywir,

Wendy Walters

Prif Weithredwr

Amg.

Wendy Walters

Prif Weithredwr, Neuadd y Sir,
Caerfyrddin, Sir Gaerfyrddin SA31 1JP
Chief Executive, County Hall,
Carmarthen, Carmarthenshire SA31 1JP



BUDDSODDWR | INVESTORS
MEWN POBL | IN PEOPLE

Mae croeso i chi gysylltu â mi yn y Gymraeg neu'r Saesneg

You are welcome to contact me in Welsh or English

Y Pwyllgor Cynllunio / Planning Committee

21/11/2023

Lle a Chynaliadwyedd - Y Gwasanaethau Cynllunio
Place and Sustainability - Planning Services

Lle a Seilwaith | Place and Infrastructure

Tudalen 3

Cyngor **Sir Gâr**
Carmarthenshire
County Council



Eitem Rhif 3

**Ceisiadau yr argymhellir
eu bod yn cael eu
cymeradwyo**

**Applications
recommended for
approval**

PL/00462

Kevin D Phillips

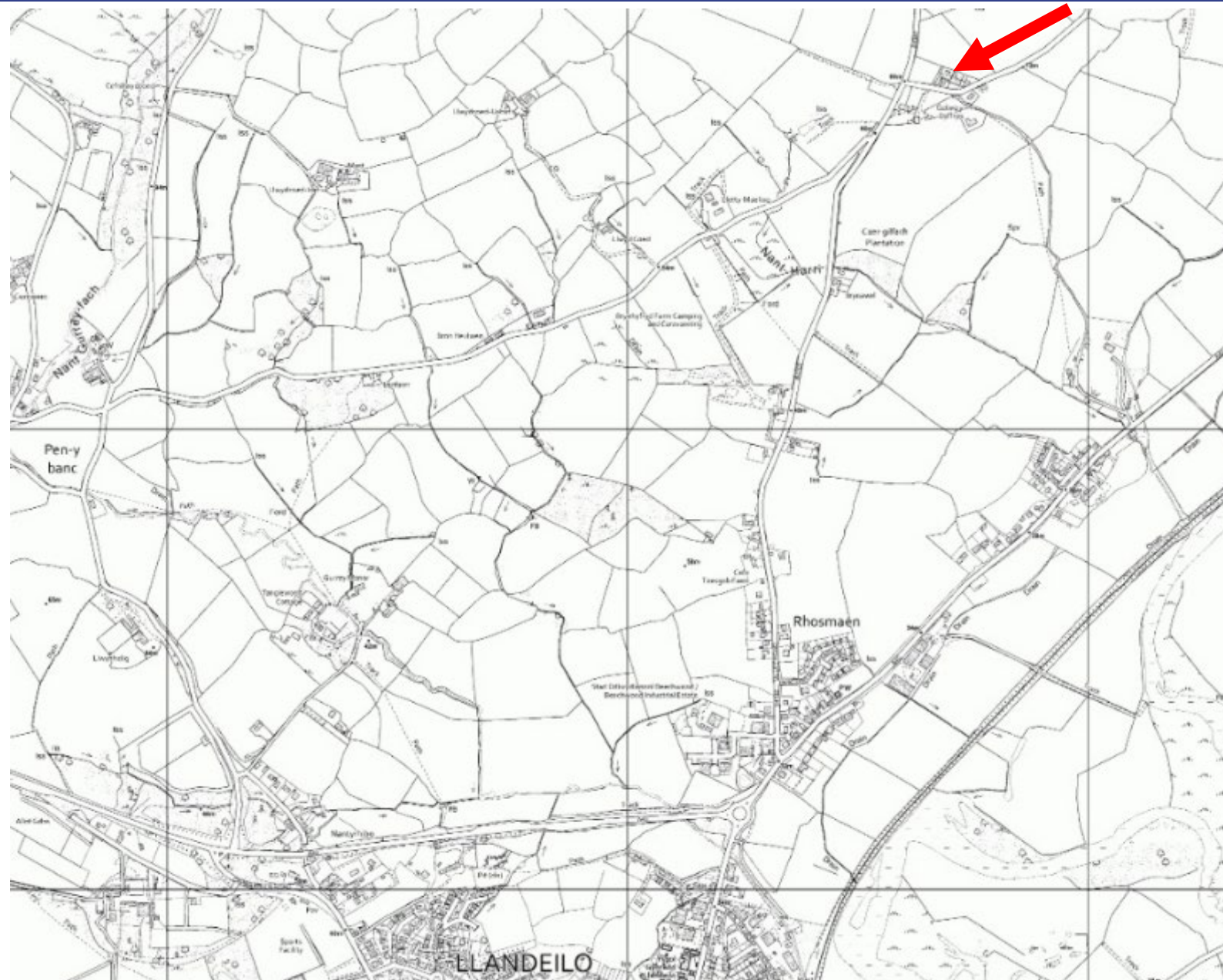
Lle a Chynaliadwyedd - Y Gwasanaethau Cynllunio
Place and Sustainability - Planning Services

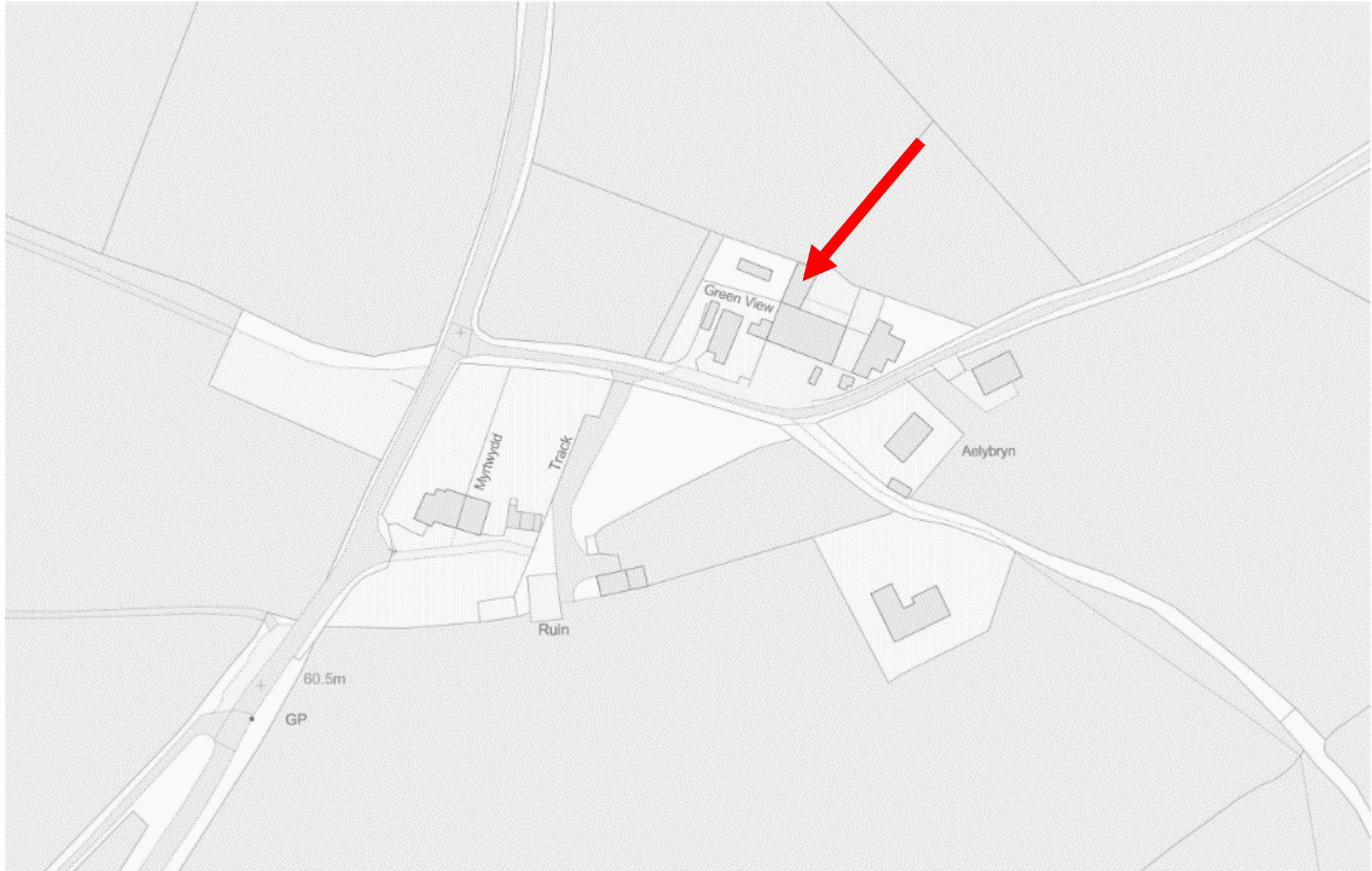
Lle a Seilwaith | Place and Infrastructure

Tudalen 5

Cyngor **Sir Gâr**
Carmarthenshire
County Council







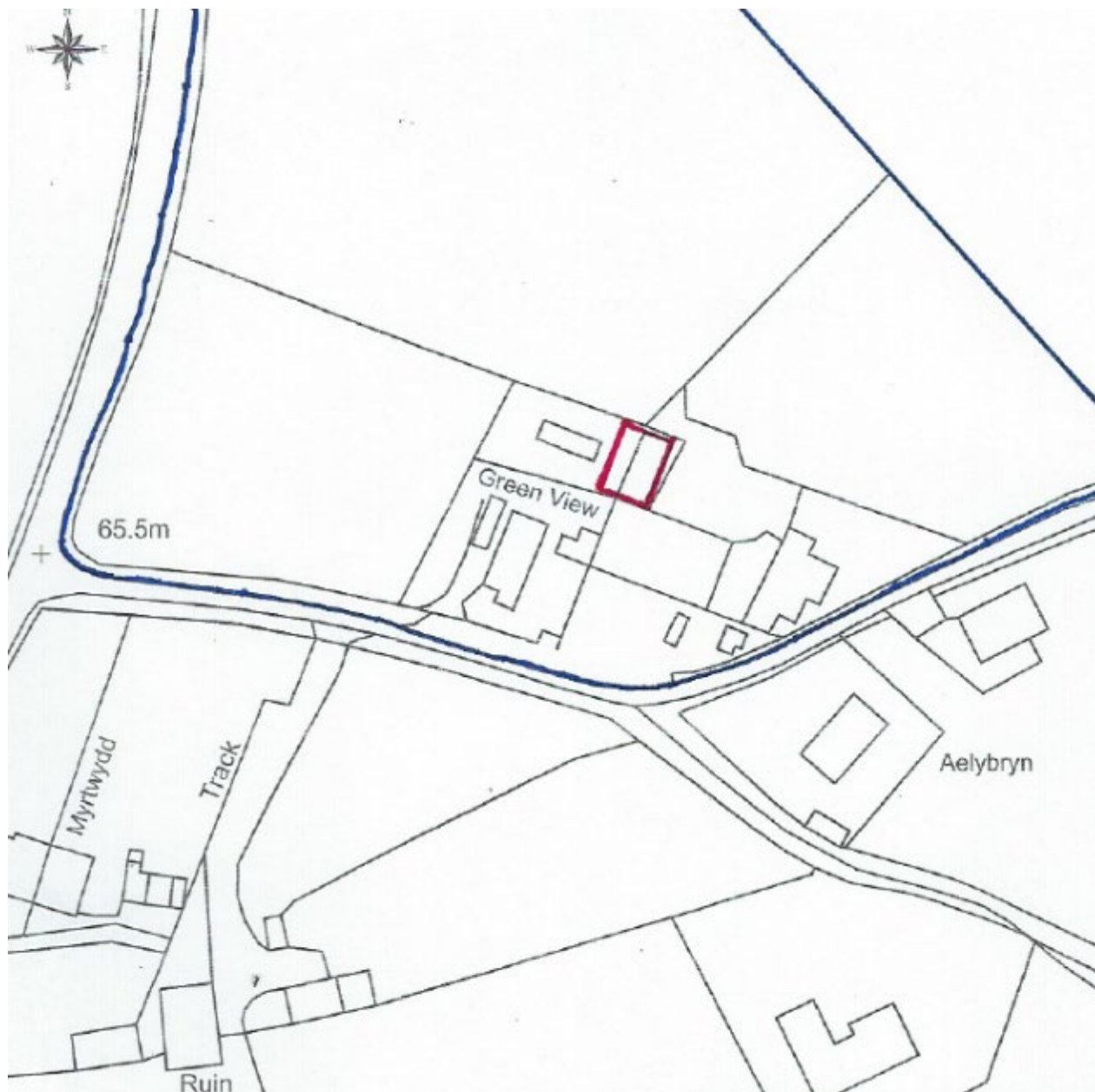
PL/00462

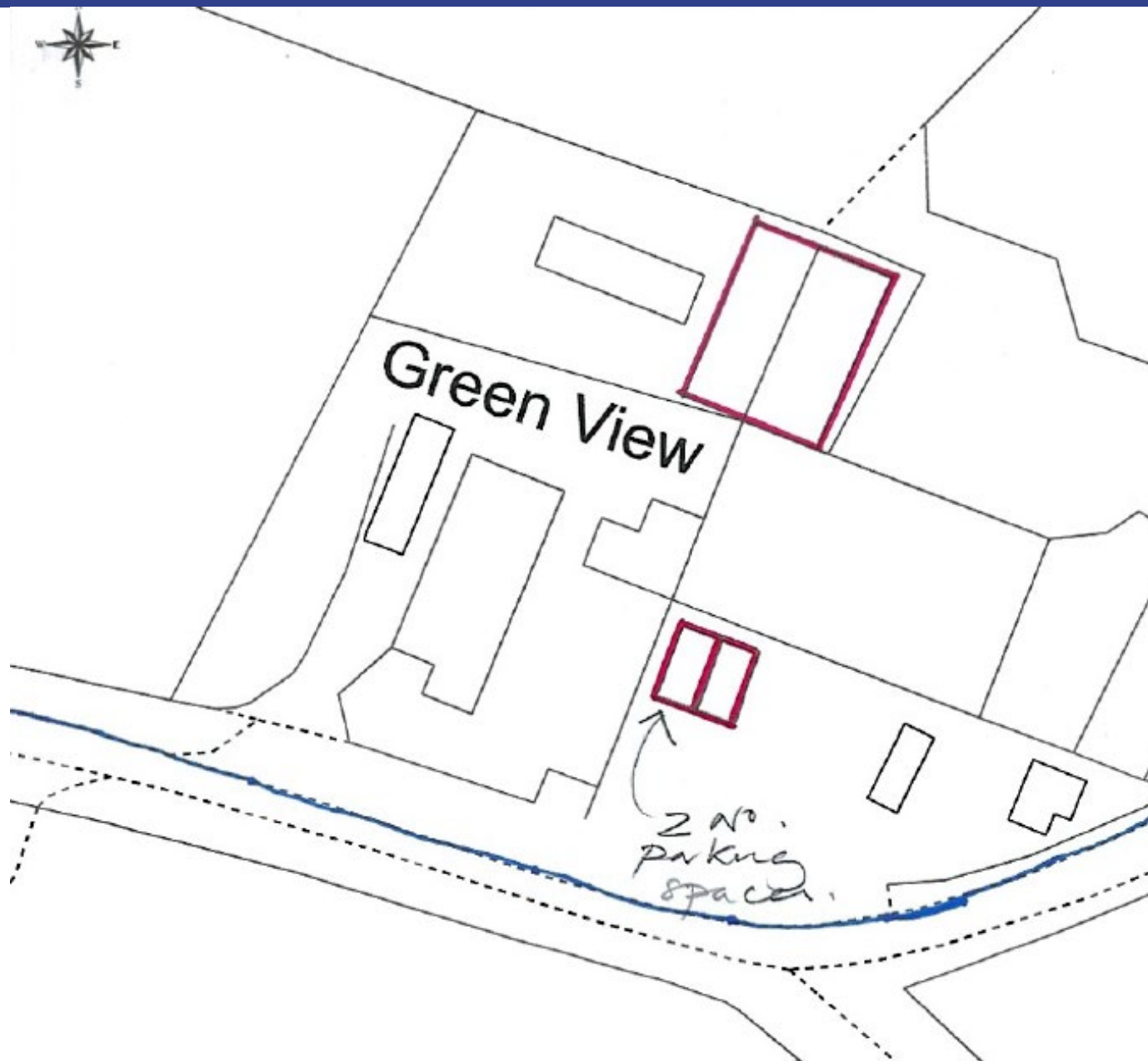
Aerial Photo

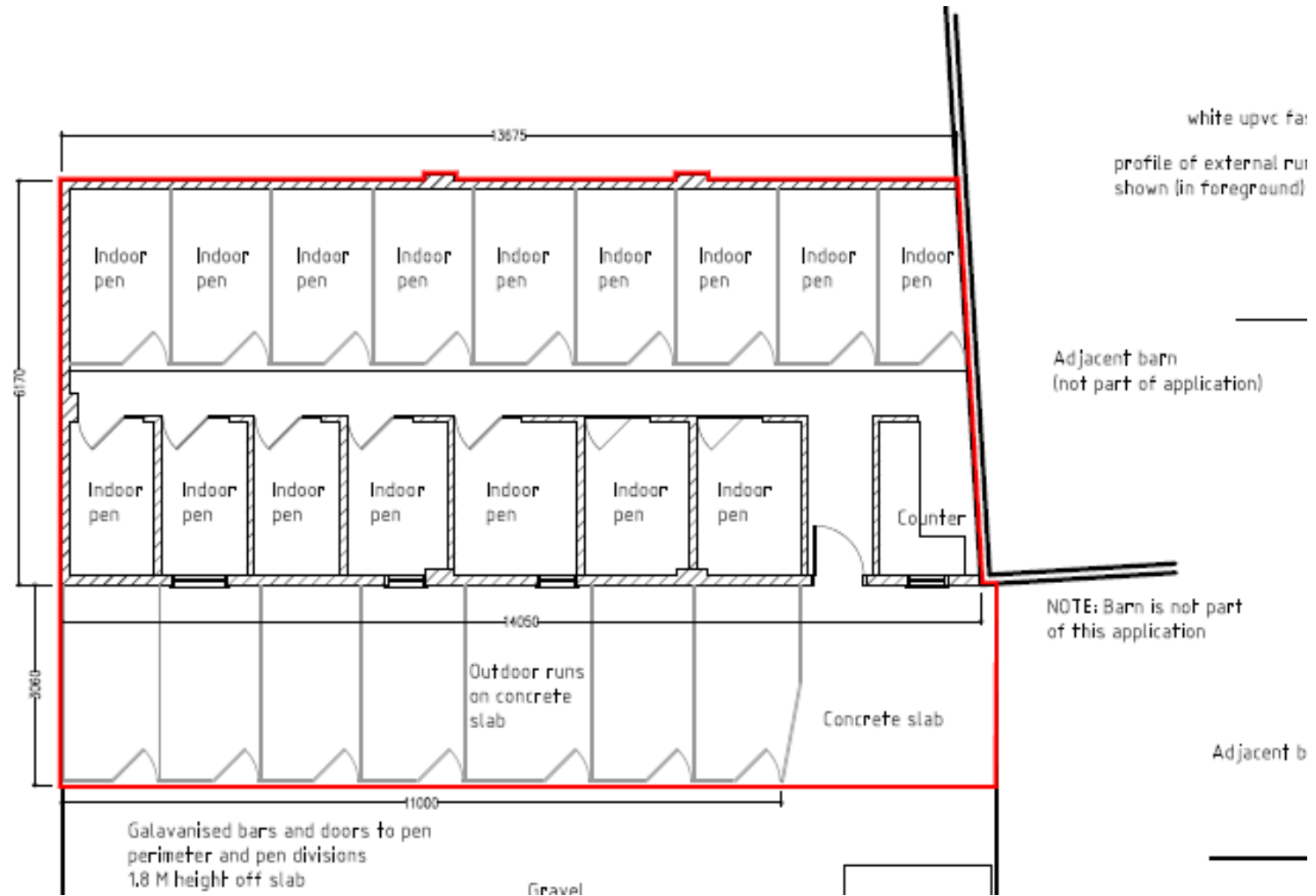


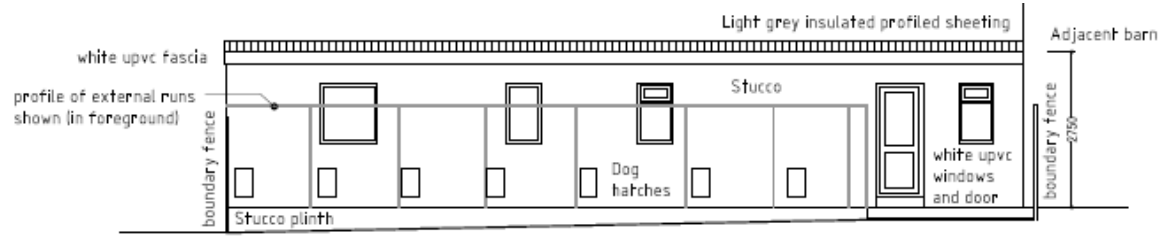
Tudalen 8



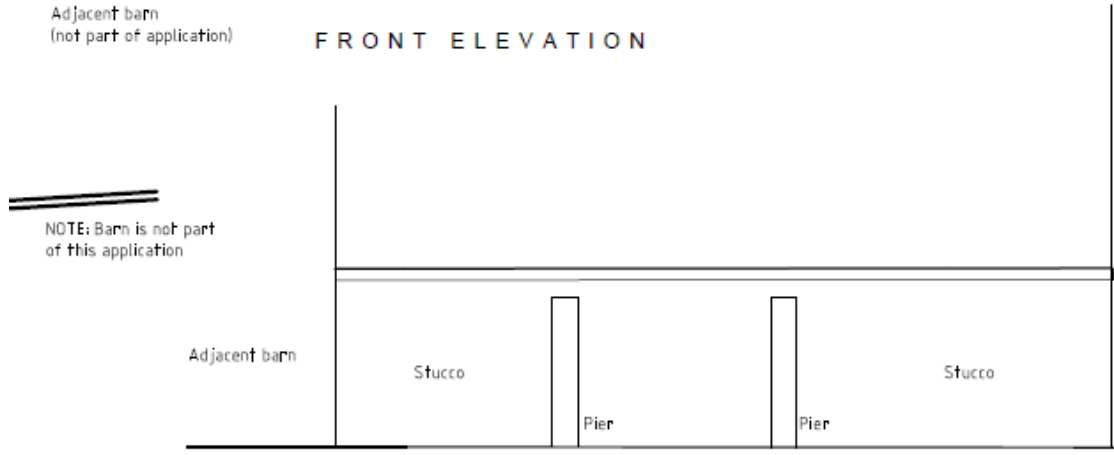






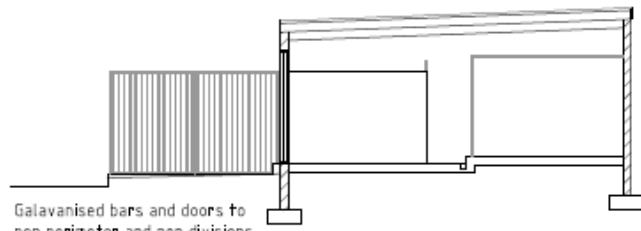


FRONT ELEVATION

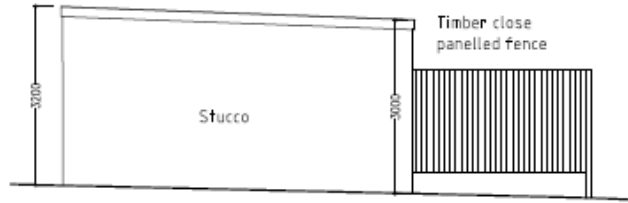


REAR ELEVATION

Timber close panelled fence generally 1.8M in height



SECTION A - A

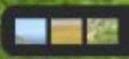


SIDE ELEVATION





Tudalen 15









PL/06769

Paul Roberts

Lle a Chynaliadwyedd - Y Gwasanaethau Cynllunio
Place and Sustainability - Planning Services

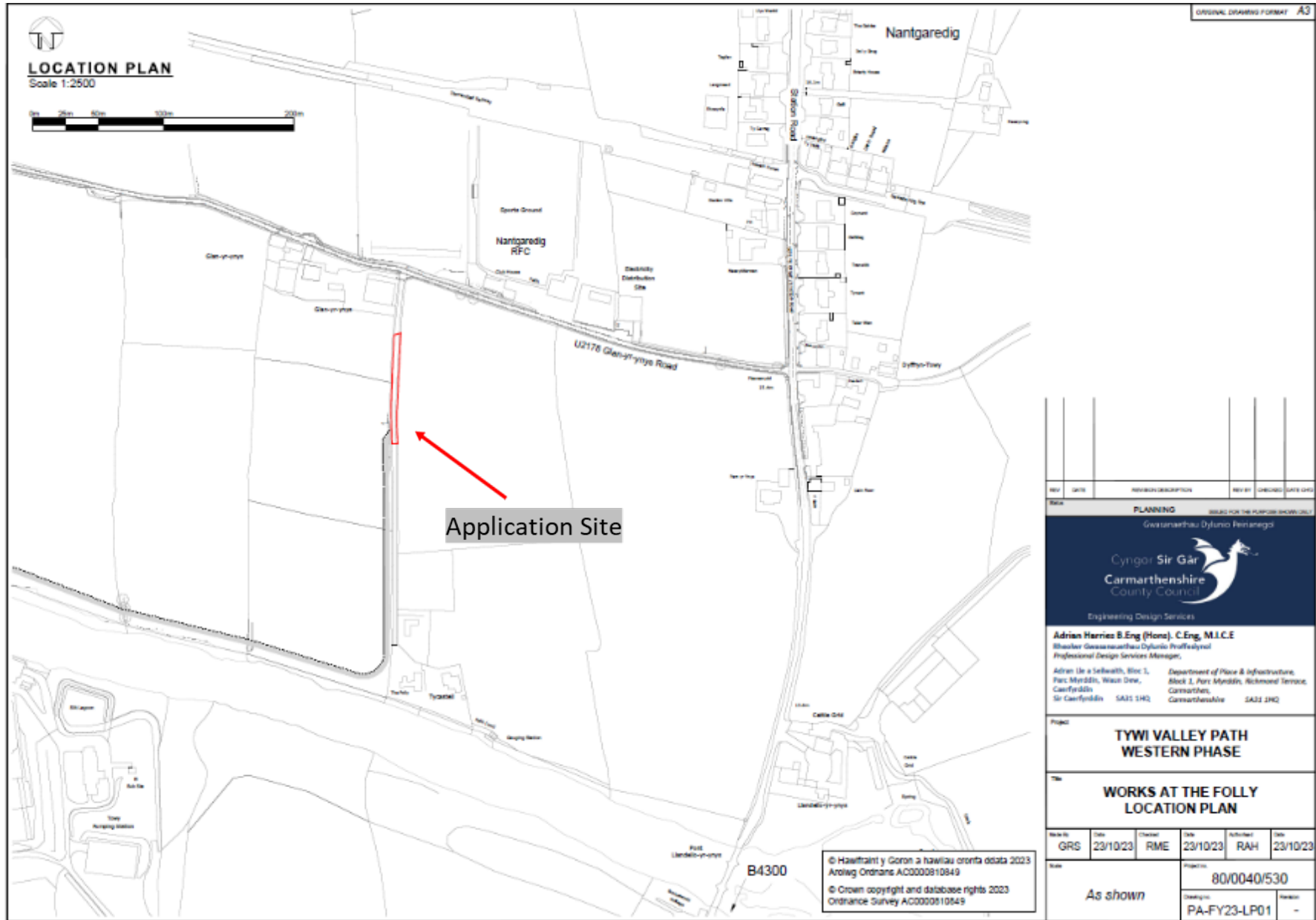
Lle a Seilwaith | Place and Infrastructure

Tudalen 19

Cyngor **Sir Gâr**
Carmarthenshire
County Council

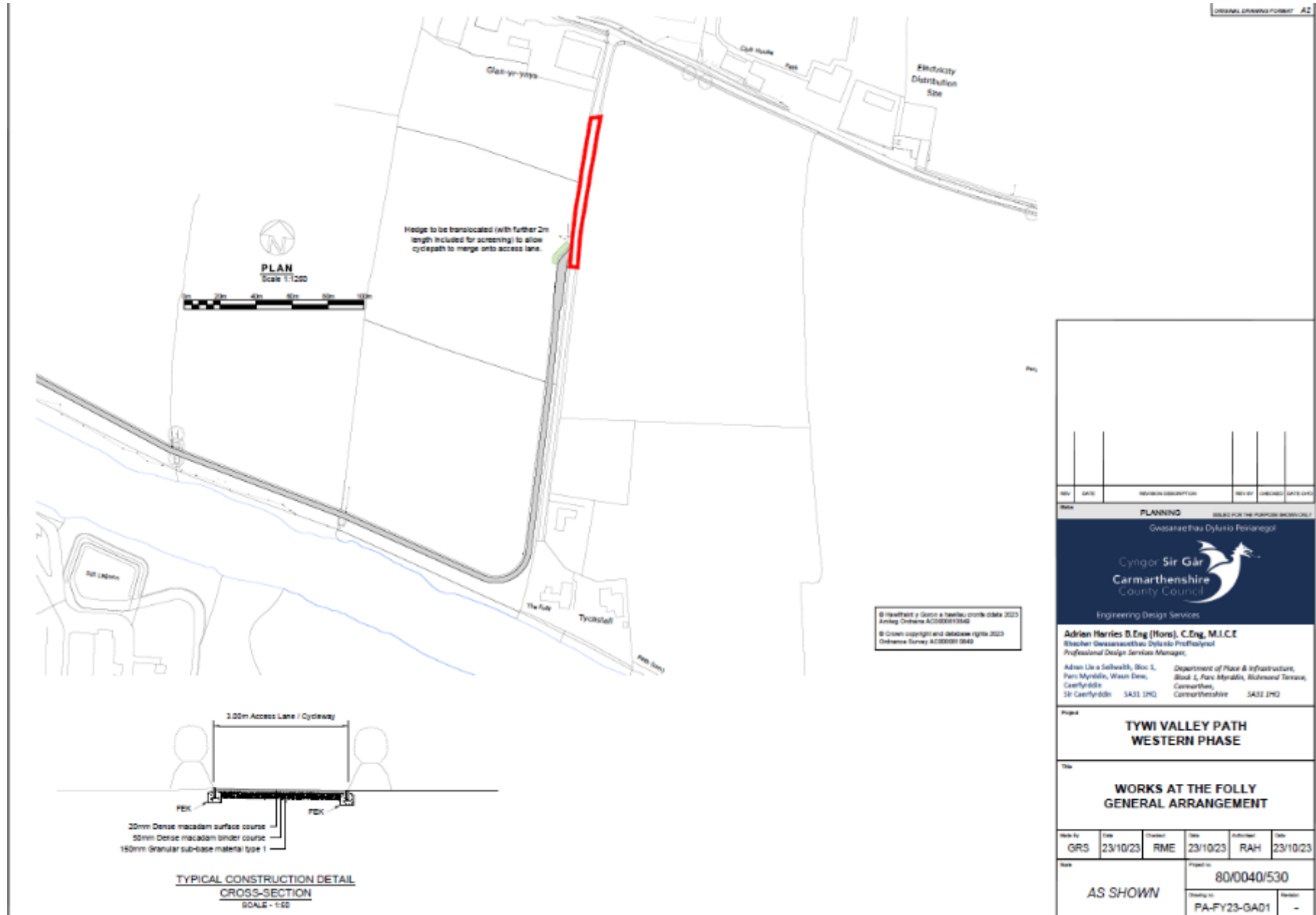


PL/06769 Location Plan



REV	DATE	REVISION DESCRIPTION	REV BY	CHECKED	DATE LOG
PLANNING ISSUED FOR THE PURPOSES SHOWN ONLY Gwasanaethau Dylunio Penamgwl Cyngor Sir Gâr Carmarthenshire County Council Engineering Design Services Adrian Harries B.Eng (Hons), C.Eng, M.I.C.E Rheolwr Gwasanaethau Dylunio Proffesiynol Professional Design Services Manager Adran Lle a Sefnwlth, Bloc 1, Parc Myrddin, Waeln Dew, Caerfyrddin, Sir Gaerfyrddin SA31 5HQ Department of Place & Infrastructure, Block 1, Parc Myrddin, Richmond Terrace, Carmarthen, Carmarthenshire SA32 2HQ					
Project TYWI VALLEY PATH WESTERN PHASE					
Title WORKS AT THE FOLLY LOCATION PLAN					
Scale to	Date	Checked	Date	Authorised	Date
GRS	23/10/23	RME	23/10/23	RAH	23/10/23
Scale As shown			Project No. 80/0040/530 Drawing No. PA-FY23-LP01		

PL/06769 Arrangement Plan

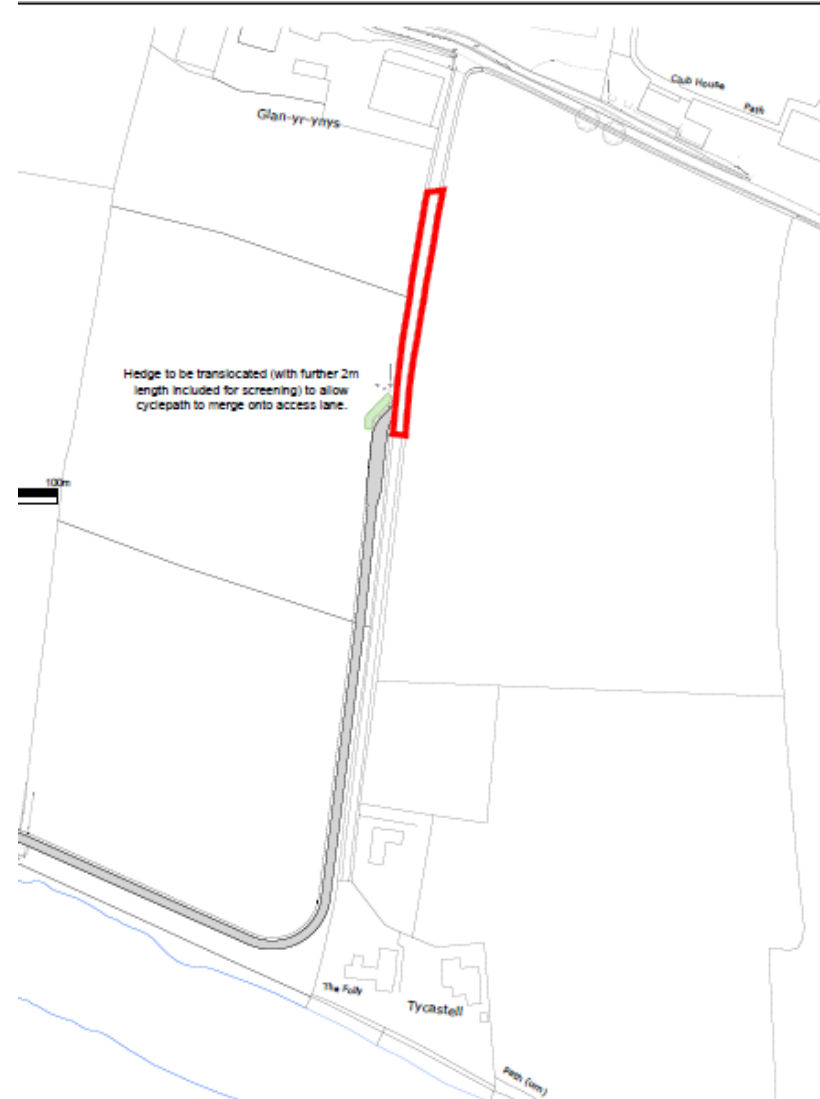


PL/06769 Comparison of Approved Routes of Path

Original Approved Route under Planning Permission W/34225

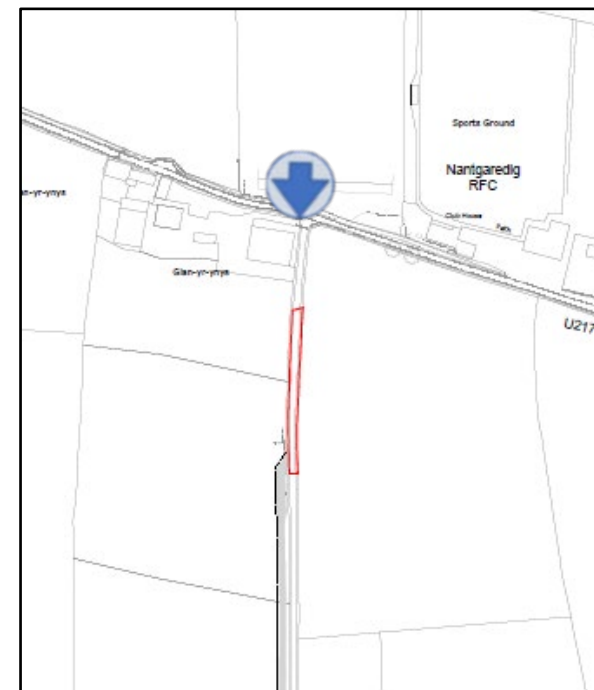


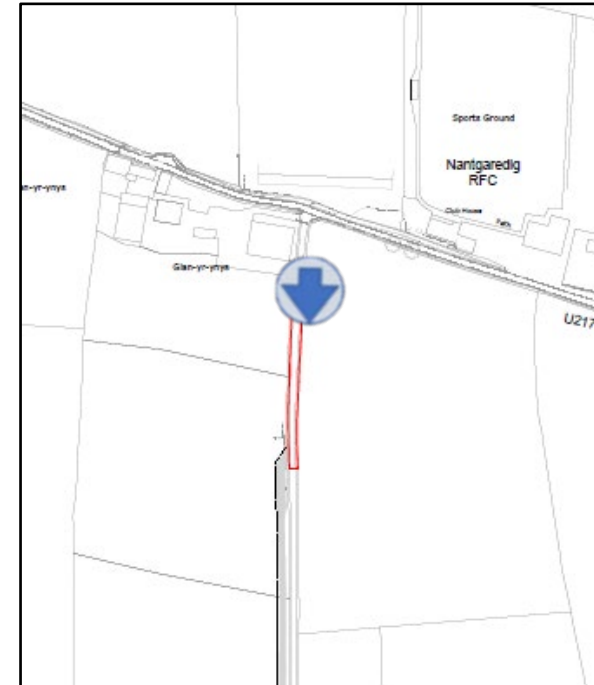
Amended route approved under Planning Permission E/37932 to address landowner request



PL/06769 Aerial Photograph

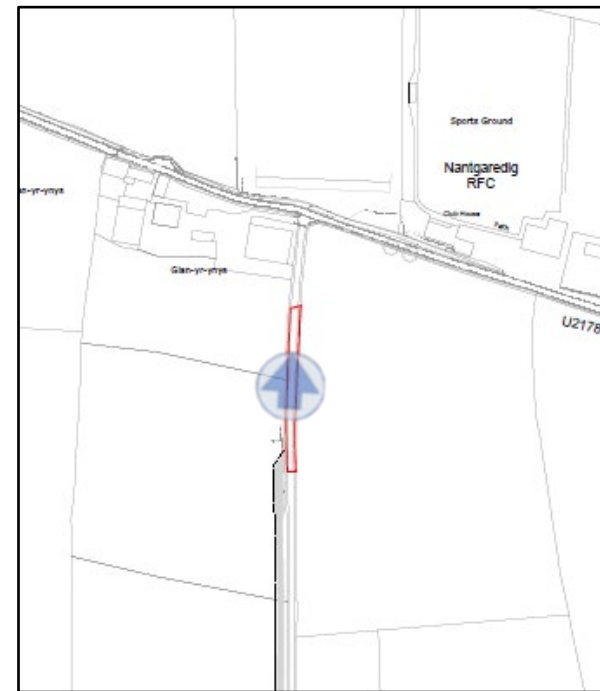






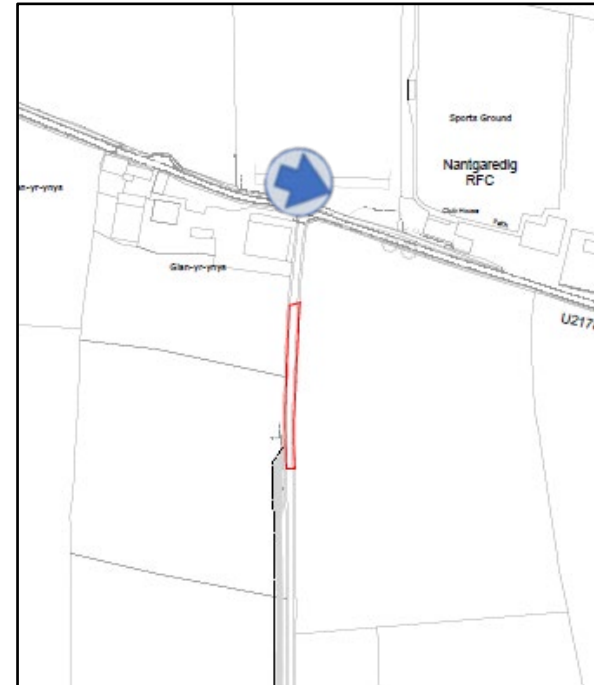


Tudalen 27



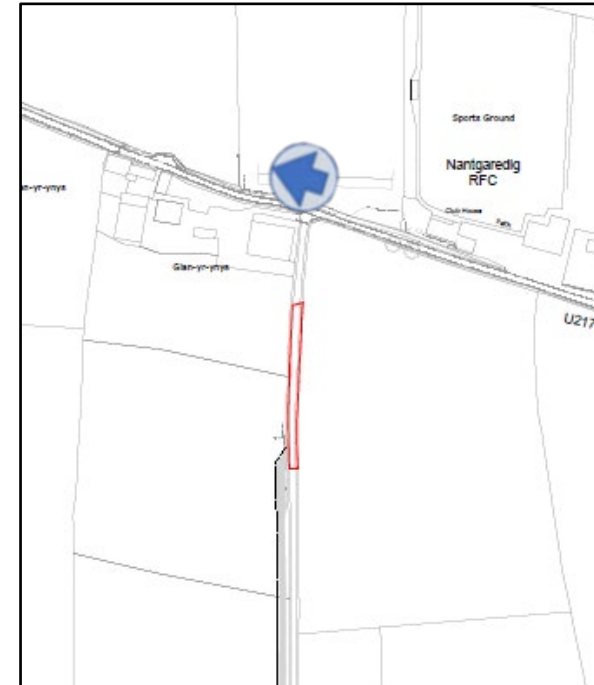


Tudalen 28





Tudalen 29



Diolch | Thank you

Tudalen 30

sirgar.llyw.cymru

carmarthenshire.gov.wales

Cyngor **Sir Gâr**
Carmarthenshire
County Council

